

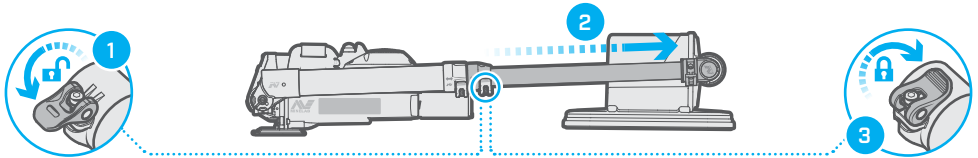
# Field Guide

## MDS-10 Dual Sensor Detector

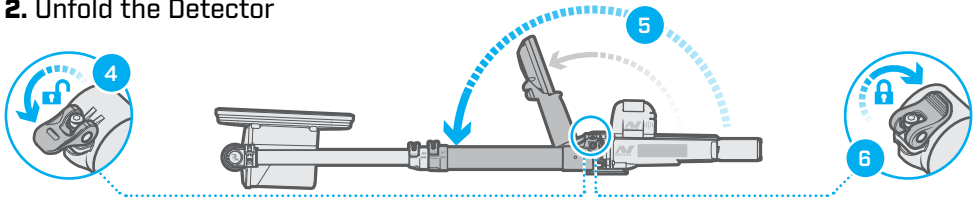
# MDS-10

## MDS-10 Unfolding Procedure

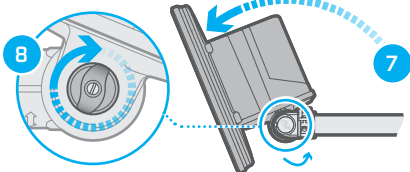
### 1. Extend the Lower Shaft



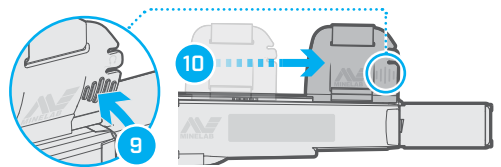
### 2. Unfold the Detector



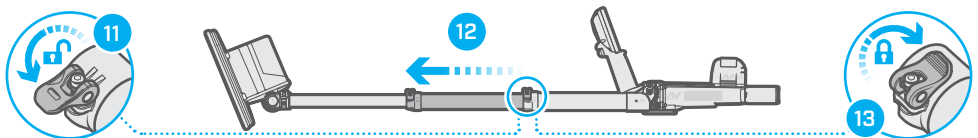
### 3. Unfold the Sensor Head



### 4. Position the Armrest



### 5. Extend the Middle Shaft



### Attach Battery

